

# Environment Policy

AffinityWater

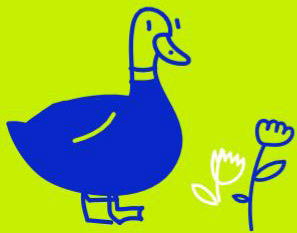
## Our environmental ambition is to:

**Leave the environment in a sustainable and measurably improved state.**

This is the first ambition statement set out in our Strategic Direction Statement. It sets out our long term ambitions to 2050, including energy management and waste reduction, and ensures that everyone who works for us will play their part to contribute to delivering on our commitment, by following our processes and procedures.

## Our purpose

**Our purpose is to provide high quality drinking water and to take care of the environment for our communities now and in the future.**



## Our commitment

Water is a precious resource and essential for life but it's also a finite resource that we take from, and return to our diverse and unique local environment. Our operating area includes four Areas of Outstanding Natural Beauty, a range of designated sites including Sites of Special Scientific Interest and Local Nature Reserves. Our supply area includes Dungeness, the largest and most-diverse stable, vegetated flint shingle beach in Europe and is also home to around 10% of England's chalk streams. These are globally rare and important habitats which support a variety of plants and animals.

Providing high quality drinking water in a region with such a diverse range of habitats poses challenges, particularly in the face of climate change and a growing population. We'll continue to seek to improve our understanding of our local environment and interactions with it. We'll use these insights to inform our decision making so we protect and enhance our local environment for current and future generations, plus prevent pollution. We'll use our Environmental Management System to meet our commitment and legal, regulatory and moral obligations.

## Our aim

It's important that for us to leave the environment in a measurably improved state that we understand and can measure our environment and our activities.

We already have an industry leading environmental monitoring network and will further expand our monitoring. We'll measure how our plans and activities impact on the environment whilst considering the broader definition of "value" through the use of a "six capitals" approach that includes natural capital.

We'll share our environmental data with our customers, communities and stakeholders to ensure transparency and enable an improved understanding of these complex systems. Our environmental data will underpin everything we do, and our decisions, plans and policies will be based on evidence-based science and best practice.

We'll ensure that our long-term strategies prepare us for the effects of climate change, both on our assets and the environment in which we operate. We'll reduce our operational and embedded carbon emissions in line with our net zero carbon commitments.

We recognise that we don't yet have all the answers to eliminate our environmental impact, so we'll work with customers, industry, regulators and our supply chain to adapt our plans and incorporate innovation and new technologies as appropriate, in support of this ambitious goal.

We'll create resilient catchments that can support a diverse range of habitats, while protecting water resources and water quality. Our supply duty will be met through a sustainable abstraction regime that optimises where and when we take water from our environment.

We'll become a centre of excellence for collaboration with our partners by facilitating and driving active engagement with customers, landowners, tenants, river groups, our environmental regulators and other organisations to fulfil our ambition. We can't solve these challenges alone and only by working in partnership will we deliver our environmental commitments and achieve our company vision.

**We'll always seek to go beyond to protect and improve our local environment**

A handwritten signature in blue ink that reads "Keith Haslett".

Keith Haslett, CEO

