

Environment Policy

We read it, we understand it, we live it

Our commitment

Our vision is to be the leading community-focused water company and we are committed to protection of the environment, prevention of pollution and compliance with environmental legislation, regulations and other requirements that are applicable to us.

To deliver on our commitment, we have set ourselves a range of objectives to protect and enhance the environment, and continually improve our management system and behaviour.

Our approach

Our directors will lead and allocate adequate resources to:

- protect water sources and quality of water supplied
- meet environmental and other legal obligations
- develop a climate adaptation plan
- promote awareness of environmental issues within the company and outside it.

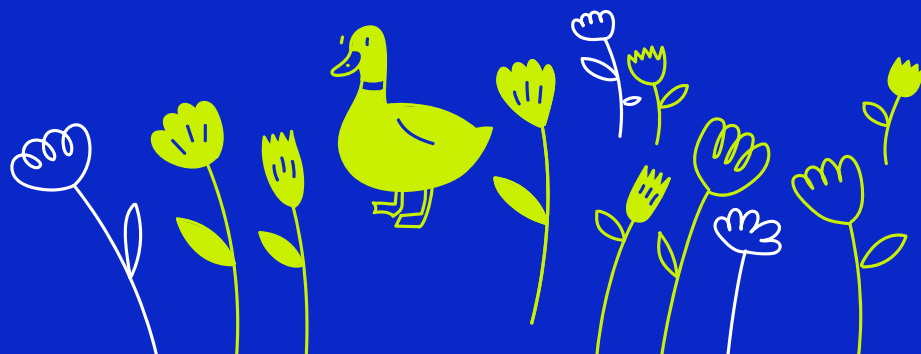
We will manage our impact on the natural environment by:

- minimising the amount of waste generated, and not recycled, from our activities
- optimising our energy use and reducing our greenhouse gas and other emissions where possible
- controlling the risks and impacts of pollution
- using trained and competent people
- working with our supply chain to address risks and minimise environmental impacts
- investigating incidents and events to learn from them
- working with our communities, regulators and government agencies to manage our impact on the environment.

Our role

Everyone who works for us will:

- familiarise themselves with our policies and procedures
- comply with our policies and procedures in their work activities
- work together to achieve our objectives, targets and to prevent pollution
- report and address environmental incidents, risks and hazards, and highlight good practice
- share learning to prevent similar incidents occurring in the future.



Stuart Ledger, CEO, Affinity Water

